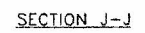
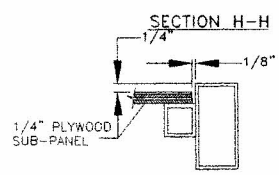
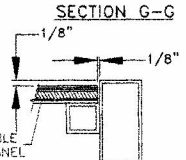
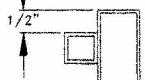
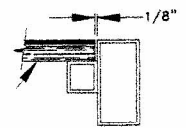
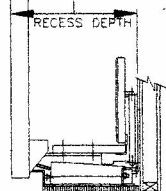


Bedface panel can be overlay in slab, flat or raised panel design. Mirror, tables, sofa design are custom quoted. Factory installed & finished.

18-5/8" SEE NOTE REGARDING MAXIMUM BEDDING DEPTH ALLOWANCE  
OR  
22" NEEDED FOR PILLOW STORAGE OR NON-SICO BEDDING GREATER THAN 15-1/2" IN DEPTH



### BED SPECIFICATIONS

#### MATERIAL SPECIFICATIONS:

- FRAME: 16-GAUGE OR HEAVIER C.R.E.W. STEEL TUBING, ELECTRIC ARC WELDED CONSTRUCTION, BAKED ON ENAMEL FINISH STANDARD, (4) COLORS TO CHOOSE FROM, RUBBER CORNERS.
- HINGES: 1/8" THICK STEEL, ELECTRIC ARC WELDED.
- PADBOARD: VINYL COVERING OVER 1/2" FOAM ON 1/2" A-C PLYWOOD
- HEADBOARD: VINYL COVERING OVER 3/4" PARTICLE BOARD.
- BASEPLATE: 3/4" PAINTED PLYWOOD.
- SPRINGS: #5160 STEEL.

#### CONSTRUCTION SPECIFICATIONS:

THE BED IS IN 6 SIZES THAT ARE CHARTED BELOW.

THE BED IS SHIPPED AS A 22" BED WHICH WILL ALLOW FOR PILLOW STORAGE WHEN BED IS FOLDED INTO RECESS. BED CAN BE CONVERTED BY CUSTOMER TO A 18-5/8" DEEP BED IF NARROWER SPACE IS REQUIRED. NO PILLOW STORAGE AT NARROWER SET-UP.

THE BOTTOM OF THE BED FRAME PROVIDES THE WALL CLOSURE. BED IS SHIPPED EITHER WITH NO FACE, 1/4" PLYWOOD SUB-PANEL, 3/8" PAINTABLE FACE OR PLASTIC FINISHED FACE. THE SUB-PANEL IS RECESSED AND TO THAT IS ATTACHED THE FINISHED BED FACE (1/4" MAX. THICKNESS) WHICH IS PROVIDED BY THE CUSTOMER.

THE FRAME IS BOLTED TO THE HINGE ASSEMBLIES, WHICH ARE SECURED TO THE BASEPLATE. THE BOXSPRING IS ATTACHED TO THE BED FRAME AND THE MATTRESS ATTACHES TO THE BOXSPRING. ALL ARE PERMANENTLY POSITIONED. ADJUSTMENT BOLTS ALLOW EASY ALIGNMENT IN RECESS OPENING AND COMPENSATE FOR THE WEIGHT DIFFERENCES IN BED FACES, BOXSPRINGS AND MATTRESSES.

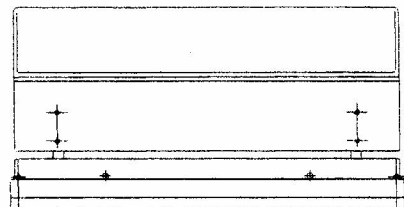
THE BED IS SHIPPED WITH (6) FLOOR ANCHOR AND TOGGLE BOLTS DESIGNED FOR HARD CONCRETE OR WOOD CONSTRUCTION. OTHER FLOORING MAY REQUIRE DIFFERENT FLOOR ANCHORS.

BED IS CARTOONED AND SHIPPED WITH THE BED FRAME, HANDLES, BASEPLATE, PADBOARD, AND HEADBOARD IN ONE CARTON. THE ACCESSORY PACK IS CARTOONED SEPARATELY AND INCLUDES SICO POWER PACKS, HEADBOARD SUPPORTS, FLOOR ANCHORS AND ASSEMBLY INSTRUCTIONS.

NOTE: KING BED IS SHIPPED IN (2) PIECES WITH HARDWARE FOR FIELD ASSEMBLY INCLUDED.

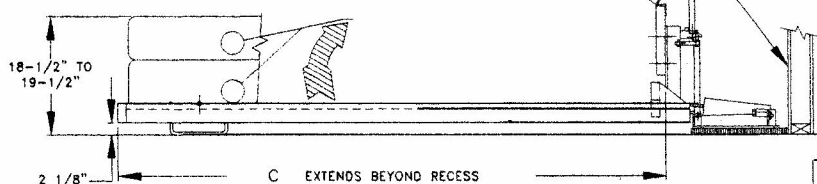
BED RAISED

2 3/8"



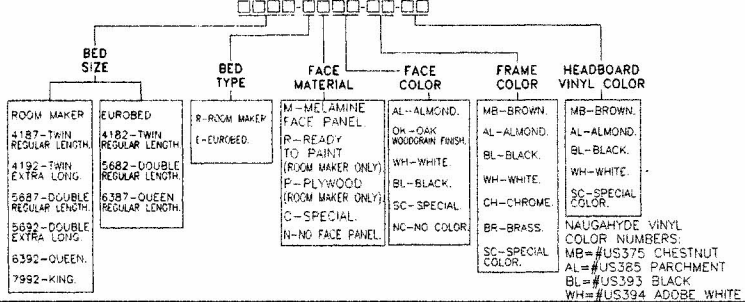
BED LOWERED

Mattress and Box Spring can not exceed 18" depth for 22" recess depth cavity. Call for options if your selection exceeds 18".



BED SIZE	A	B	C	D	E
TWIN REGULAR	40-1/2"	83-1/8"	77-3/4"	41"	83-1/2"
TWIN EXTRA	40-1/2"	88-1/4"	82-7/8"	41"	88-5/8"
DOUBLE REGULAR	55-1/2"	83-1/8"	77-3/4"	56"	83-1/2"
DOUBLE EXTRA	55-1/2"	88-1/4"	82-7/8"	56"	88-5/8"
QUEEN	62"	88-1/4"	82-7/8"	62-1/2"	88-5/8"
KING	78-1/2"	88-1/4"	82-7/8"	79"	88-5/8"

#### WALLBED MODEL NUMBER FORMAT



- REVISION  
06-12-84  
04-27-83  
05-20-85  
10-18-90  
06-24-92  
11-16-92

**Room Maker Series Bed Specifications**

SCALE  
DRAWN BY JIM K.  
DATE 2-16-81

888 892-4645  
Copyright 2002 SICO Incorporated  
DRAWING NUMBER  
**71547**

- Room Maker Options:  
Electric Motor Assist  
Additional Power Packs  
Custom Sizes  
Horizontal Deck Platform

FlyingBeds.com Inc 888 892-4645  
5125 E. Stapleton Dr. Denver, Colorado 80216